

# ZM-9012

## REMOTE CONTROL PANEL

Designed for exclusive use with the 9000M2 Series amplifier or M-864D, the ZM-9012 is a wall mounted remote control panel having a volume control knob. It is used in conjunction with the RC-001T Remote control module or M-864D. It can be mounted in a standard 1-gang electrical box in the wall.



Article number: ZM-9012  
 Alternative products: ZM-9011, ZM-9013,  
 ZM-9014

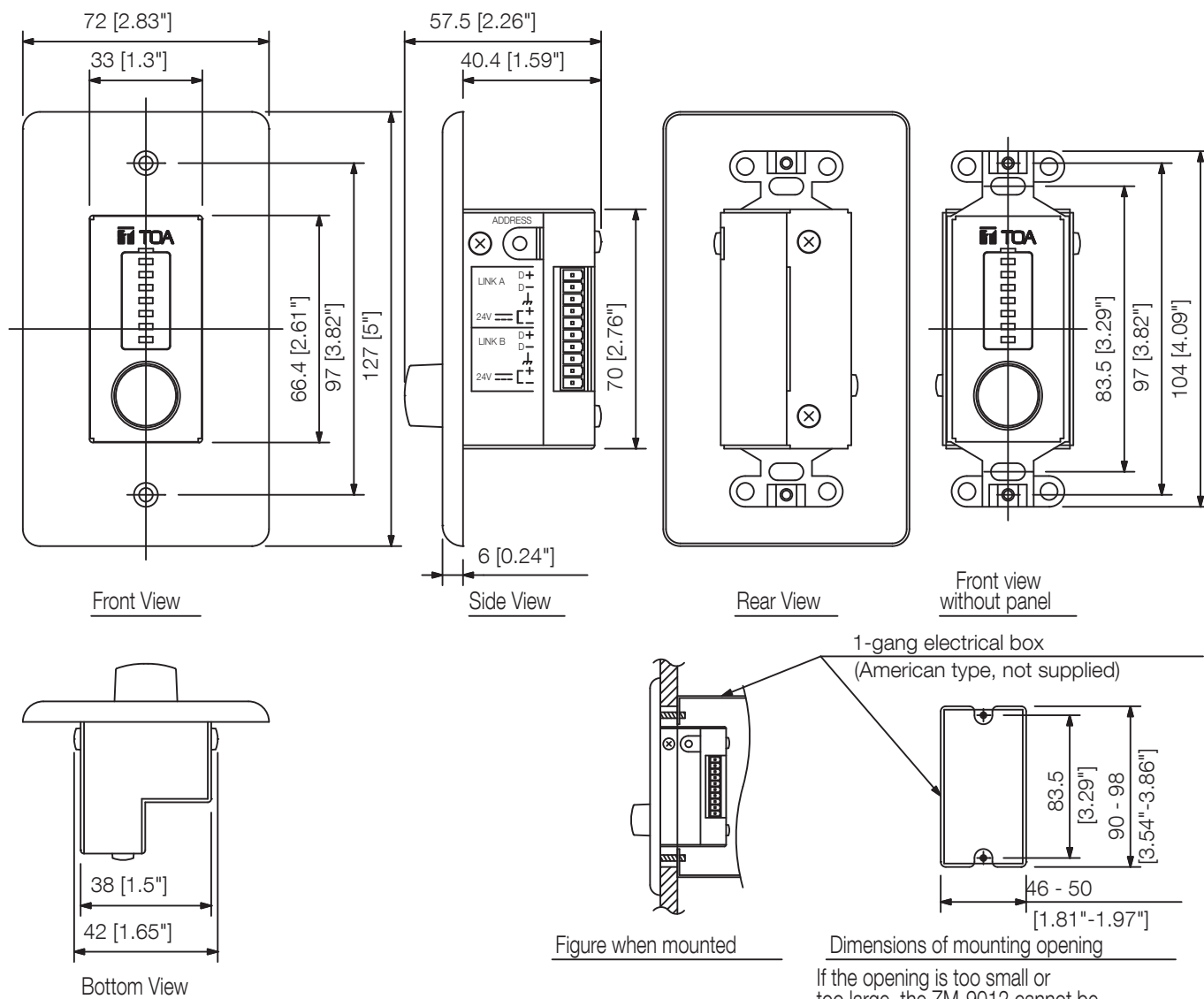
### Specifications

Applicable cable	Shielded CPEV cable (paired data line and paired power line) or CAT5 twisted pair cable for LAN
Power source	24 V DC (supplied from RC-001T)
Current consumption	0,1 A
Indicator	level indicators
Dimensions	72 x 127 x 57.5 mm (W x H x D)
Gross weight	0,32 KG
Finish	Steel plate, surface-treated, paint, white,
Weight	0.16 kg

# ZM-9012

## REMOTE CONTROL PANEL

### Appearance



If the opening is too small or too large, the ZM-9012 cannot be mounted in the wall. Be sure to make an opening with dimensions given above when mounting.

UNIT:mm SCALE:1/2