

ZM-9001

ZONE MANAGER

The ZM-9001 is a remote control switch panel used with the 9000 series amplifiers. It provides an additional 6 control inputs of amplifier expansion, and can be mounted in standard 1-gang electrical box in the wall.

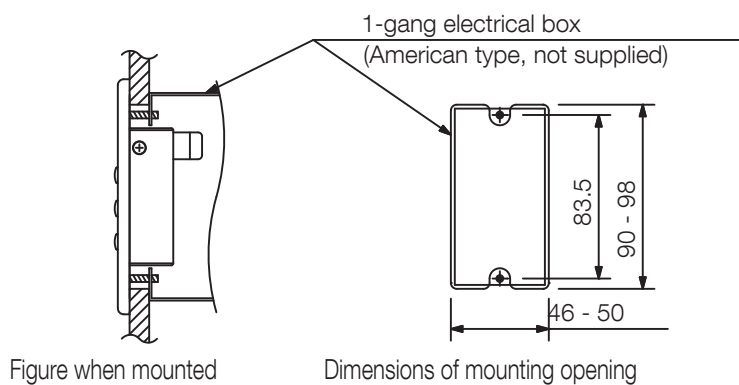
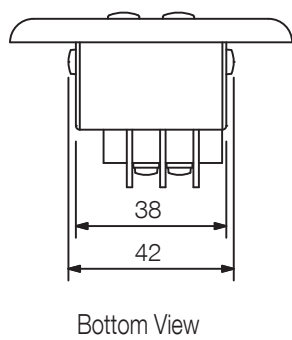
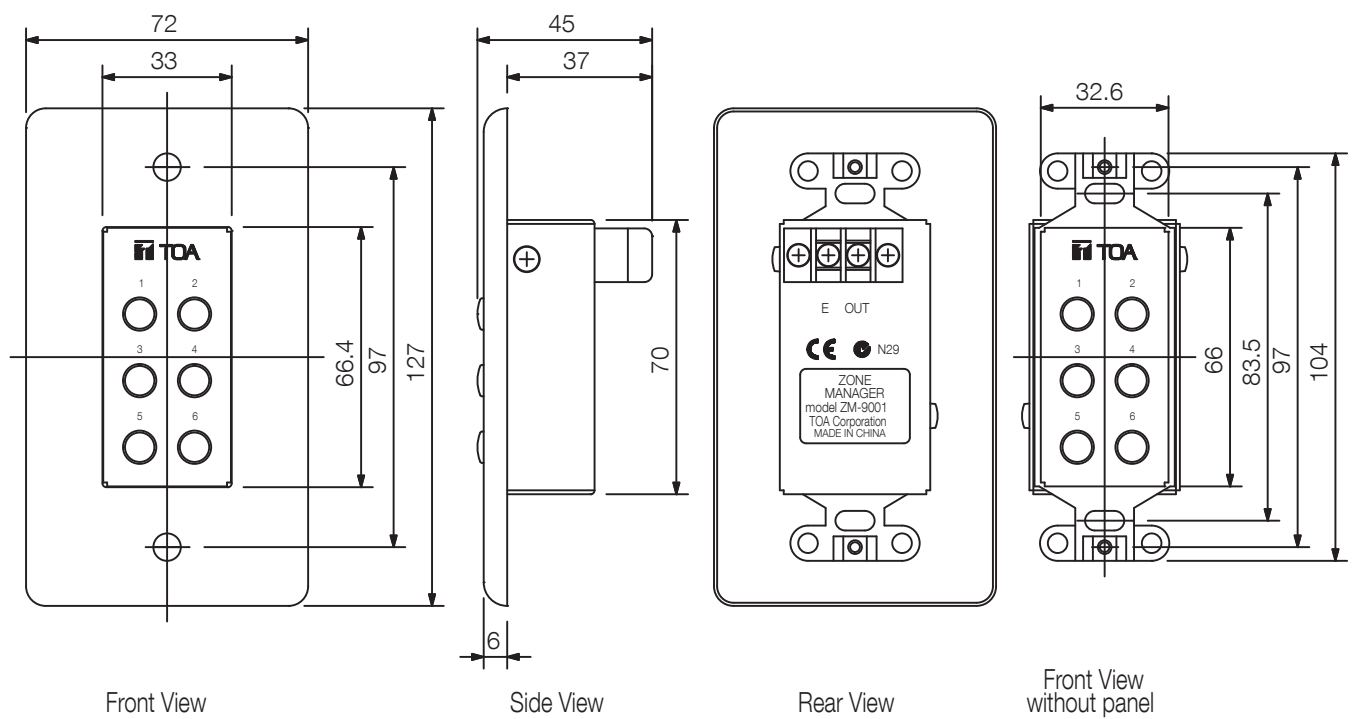


Article number: ZM-9001
Alternative products: ZM-9002, ZM-9003

Specifications

Applicable cable	Single conductor shielded cable
Line resistance	50 Ω per line
Connection	M3 screw terminal, distance between barriers: 7.62 mm
Dimensions	72 x 127 x 45 mm (W x H x D)
Gross weight	0,3 KG
Finish	Steel plate, surface-treated, paint, white,
Weight	0.17 kg

Appearance



If the opening is too small or too large, the ZM-9001 cannot be mounted in the wall. Be sure to make an opening with dimensions given above when mounting.

UNIT:mm SCALE:1/2